

**BUILDING TOMORROW'S
FOUNDATIONS**

ALSAAD GENERAL CONTRACTING





CEO MESSAGE

Issam A. Kronfol

We look forward to being your trustworthy partner

Thirty Two years of continuous growth, is proof of the momentum that has been maintained at Alsaad General Contracting Company since its incorporation in Jeddah, Saudi Arabia back in 1983. Years later, viewing its growth and performance, cannot but make us all proud of having established ourselves as one of the leading turnkey general contractors who provide total engineering, procurement, and construction services.

Our Company is a dynamic entity that has successfully adjusted to the ever changing and growing needs of its customers and business community members; constantly adding value to their needs and requirements. Our motto has been focused on providing them with the best work and safety standards in the field of building construction, heavy civil as well as marine & dredging works.

The central most important factor in our business philosophy is the way we view and value our long term relationships with customers. This element, by itself, is one factor that we worked hard to establish and advance over the years. Maintaining professional integrity and work ethics in our dealings with third parties & servicing client requirements to the best of our capabilities and industry standards are two important factors guiding our daily performance.

Alsaad General Contracting Company enjoys the services of a team of highly talented engineers and staff as well as a largely dedicated and well trained work force. Financials are handled by a team of valued professionals who earned the trust and support of major bankers and

financiers. Their efforts have provided us with constant funding needs; thus allowing us to secure large scale public and private projects as well as initiate expansion plans in the Middle East, Gulf, and Africa.

Shareholders' equity and private investments have been multiplying.

New investments leveraging themselves to acquisitions made in construction related companies specializing in pre-cast hollow-core concrete works, pre-engineered and hot rolled steel works, aluminum and glazing works, wood works as well as building material trading. They all form part of our great big family and complement our main business activities.

Those diversified ventures share one single objective intended to control quality and resources and give our company an edge over its direct competition.

None of this would have been possible without our trusting clients and partners as well as the diligence and skill of our committed staff. The Board of Directors is most grateful to all and each of them.

To conclude, allow me to invite you to review our brochure and see for yourselves few of our successfully accomplished past operations with an eye closely focused on our future goals. For that, ***we look forward to being your trustworthy partner.***

Issam A. Kronfol
Partner/Group CEO





OUR PROFILE

Alsaad General Contracting Company is an established construction company in the Kingdom of Saudi Arabia as well as in Lebanon and Qatar.

Our vision is to be perceived as the ultimate regional contractor operating in the fields of “ buildings, industrial, marine and heavy civil works ” construction; while initiating expansion plans in other parts of the Middle East, Gulf, and Africa.

Our goals for achieving this vision are based on:

- > Our past performance and name recognition during more than 32 years of existence.
- > Our sustained commitment to quality and innovative engineering solutions, and continued self-benchmarking against the construction industry.

> The enhancement and bonding of corporate relationship with our Clients and Employees while focusing on professional qualifications, integrity, trust, and confidence.

> Our working environment is built on team spirited cooperation between the different divisions and companies operating under the banner of Alsaad General Contracting Company.

OUR VISION & MISSION

Alsaad General Contracting Company aspires to grow and become a key player in the Middle East & Africa region, as a contractor which is best known for the excellence and quality of its products.

Our mission is to sustain our long-term commitment towards all stakeholders (clients, shareholders, partners, suppliers, and employees), by:

- > Developing a leading role in our core set of activities: Civil, Industrial, Marine, and EPC, in both public and private sectors.
- > Encouraging an entrepreneurial culture, which allows for creativity, with authority and accountability.
- > Focusing on project management excellence to deliver high quality and

customer satisfaction.

> Operating as an institutionalized organization, where committed and hard working professionals can work with pride and build a career.

> Upholding high ethical standards.



OUR VALUES

- > Be pro-active with clients & consultants.
- > Be professional team players.
- > Improve continuously.
- > Exceed customer expectations.
- > Maintain high ethical standards for discipline, integrity, and accountability.
- > Seek win-win relationships.

RESOURCE HIGHLIGHTS

- > Over 7,000 employees of whom more than 500 professionals.
- > Over 200 design and construction engineers in charge of civil, architectural, electrical and mechanical as well as marine disciplines.
- > Highly qualified technicians performing specialized construction and finishing works.
- > An experienced team in charge of banking and project financing.
- > Vast fleet of construction equipment, vehicles and workshops.
- > Significant offshore construction equipment and support vessels.

RESOURCES

Alsaad has evolved into one of the most reputable contracting companies in Saudi Arabia and the Middle East region.

The company is structured to develop, engineer, procure and construct complex projects on a turnkey basis.

Alsaad uses a modern and systematic approach in the implementation of projects from the pre-award phase of developing conceptual designs, pricing, proposal preparation, bid submittal and negotiations; till the final phase of engineering, procurement & construction.

Alsaad's manpower, plant and equipment resources, coupled with its expertise in project Management, has ensured

customer satisfaction and success in the execution of all types of projects.

Alsaad's IT infrastructure is a key ingredient in managing and tracking progress of projects, both at site and at the office.

Furthermore, Alsaad has a centralized database with information being shared between its head office, branches and sites.

OUR VALUE CHAIN

PROJECT MANAGEMENT

Alsaad General Contracting meets its objectives by undertaking multiple projects and completing them successfully, on time, by using advanced project management skills that maintain quality, safety and customer relations.

To this end, our company has planned its organizational structure to cater for the demands and prioritization of its projects, hence the need for integrated applications in the multi faceted phases of planning, executing, monitoring, controlling and handing over of the projects.

ENGINEERING

Alsaad has a professional team of engineers and designers whose tasks include, among others: review of conceptual drawings at the proposals stage and, thereafter, shop drawings for the construction stage and as-built drawings for the handing over phase.

The submittals are sent to the consultant for final approval in compliance with the design requirements, specifications, scope statements, and project schedule.

The group utilizes computer aided design CAD systems for two and three dimensional designs and makes sure that drawings for different disciplines are well coordinated.

PROCUREMENT

The procurement team sources and secures material supplies, equipment, and diversified services, as and when needed at the most economically favorable terms and in conformity with the project specifications and code requirements. They coordinate logistics to ensure prompt delivery to meet project schedules.

CONSTRUCTION

Alsaad General Contracting Company's proficiency in construction has been demonstrated through its successful completion of numerous complex projects on time and up to the required specifications.

Significant resources and years of experience, coupled with ownership of vast construction equipment, contributed towards our success in delivering projects to the full satisfaction of our esteemed clients.

Leveraging resources through the formation of successful joint ventures with well known national and regional contractors have further broadened our construction arm and financial prowess.

TURNKEY PROJECTS

Alsaad General Contracting Company assumes total responsibility for the planning, engineering, procurement and construction of a fully-equipped facility, ready for operation at the "turn of the key," which may include any combination of civil, marine, electro-mechanical, finishing and interior design works.

INTERIOR PROJECTS

Alsaad General Contracting Company has forged strategic alliances with internationally recognized interior designers. Work includes undertaking the responsibility of planning, procuring and constructing miscellaneous scopes as defined in an internal decoration scheme inclusive of the supply and installation of any combination of finishes, and loose or soft furniture.

OUR ACHIEVEMENTS

> PUBLIC FACILITIES & OFFICE BUILDINGS



> RESIDENTIAL & INTERIORS



> HOTELS & RESORTS



> EDUCATIONAL & SPORTS FACILITIES



> MARINE & DREDGING



> POWER & INDUSTRIAL





PUBLIC FACILITIES & OFFICE BUILDINGS

- | | |
|---|---|
| 01 Red Sea Mall | 07 Civil Defence Heliports |
| 02 Beirut City Center | 08 Saudi Arabian National Guard Facilities |
| 03 The Tent Retail Center | 09 Light Industrial Facilities |
| 04 Al Turki Business Park | 10 Central Security Facility |
| 05 Jeddah Municipality | 11 PWA Car Parking Building |
| 06 Saudi Fransi Bank Regional Headquarters | |



01

RED SEA MALL

Jeddah, Saudi Arabia

This turnkey shopping mall is located along Al Malek Road in Jeddah, Saudi Arabia.

Alsaad, with Almbani General Contracting as Joint Venture partners, redesigned the mall's reinforced concrete structure, and executed the civil, structural, architectural, electro-mechanical, finishing, external landscaping, and hardscape trades. Red Sea Mall boasts two 6-story high hotel blocks, three floors exclusively dedicated to retail, a hypermarket, anchor stores, an amusement center, food court, car parking facilities, service areas, and external access roads. Alsaad delivered

upscale finishes, met the extremely tight 24 month deadline, and successfully assumed the challenges of constructing the expansive 25,000 m² metal skylight and curtain wall facades since they had to seamlessly combine aesthetics with viable engineering solutions. The total built-up area is 257,000 m² with a GLA of 110,000 m². The project was completed and handed over in March 2008.





02

BEIRUT CITY CENTER

Beirut, Lebanon

This turnkey shopping mall is located in Hazmieh, Lebanon.

Beirut City Center features three underground parking levels for more than 1,752 cars, three retail floors with more than 200 stores, and food and entertainment facilities at the roof top. As Majid Al Futtair's first flagship mall in the Levant region, it boasts the country's first Carrefour Hypermarket, first 13 multi-screen VOX cinemas, and first Magic Planet family Entertainment Centre. Alsaad worked on the civil, architectural, mechanical and landscaping trades. The mall not only has distinctive design features

and creates a friendly environment with ample natural light, but has a Gold LEED certificate. Unique elements include the skylight design with its almost real simulation of the alternating pattern of sea waves and the curtain wall facades made of internationally famous Schuco aluminum profiles resulting in a highly reliable performing system. The total built-up area is 163,000 m² with a GLA of around 62,000 m². The project was completed and handed over in April 2013.





03

THE TENT RETAIL CENTER

Riyadh, Saudi Arabia

This highly engineered turnkey shopping center with superior finishing is located along Khourais Road in Riyadh, Saudi Arabia.

Alsaad worked on the civil, structural, architectural, electro-mechanical, conveying systems, curtain wall, roof structure, pre-cast cladding, and external works. The Tent Retail Center features a hypermarket, retail shops, game rooms, service rooms, and parking facilities. The first floor is elevated to provide room for an open car parking space while its shops are covered by an eye-catching Teflon roof tent structure which gives this project its name. Its total built-up area is

79,400 m². The project was completed and handed over in February 2005.





04

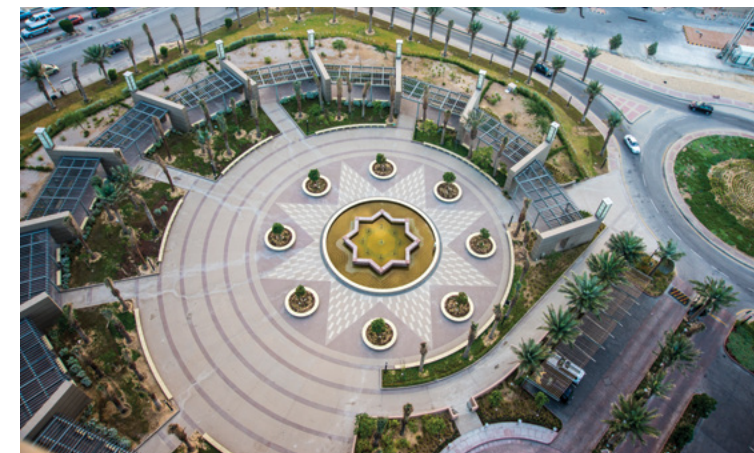
AL TURKI BUSINESS PARK

Al Khobar, Saudi Arabia

This high-end integrated office complex is located in Al-Khobar, Saudi Arabia.

Alturki Business Park was designed by I. M. PEI, a world renowned architect and master of modern architecture. Alsaad played a central role in bringing this design to life. The centerpiece of this architectural icon is a 16 floor ultra-modern high rise tower which incorporates the latest and most advanced design and technology features. It spans 31,000 m² with attractive office space for high-profile, large businesses in addition to a range of facilities, including a high tech Building

Management System, auditorium, seminar halls, gymnasium, restaurant, prayer area, and two underground parking areas for up to 370 cars. This impressive tower is surrounded by a block of ten buildings for small enterprises. Each "Loft" has three levels with individual areas, paving the way for flexible office planning. The total built-up area is approximately 34,450 m². The project was completed and handed over in September 2010.





05

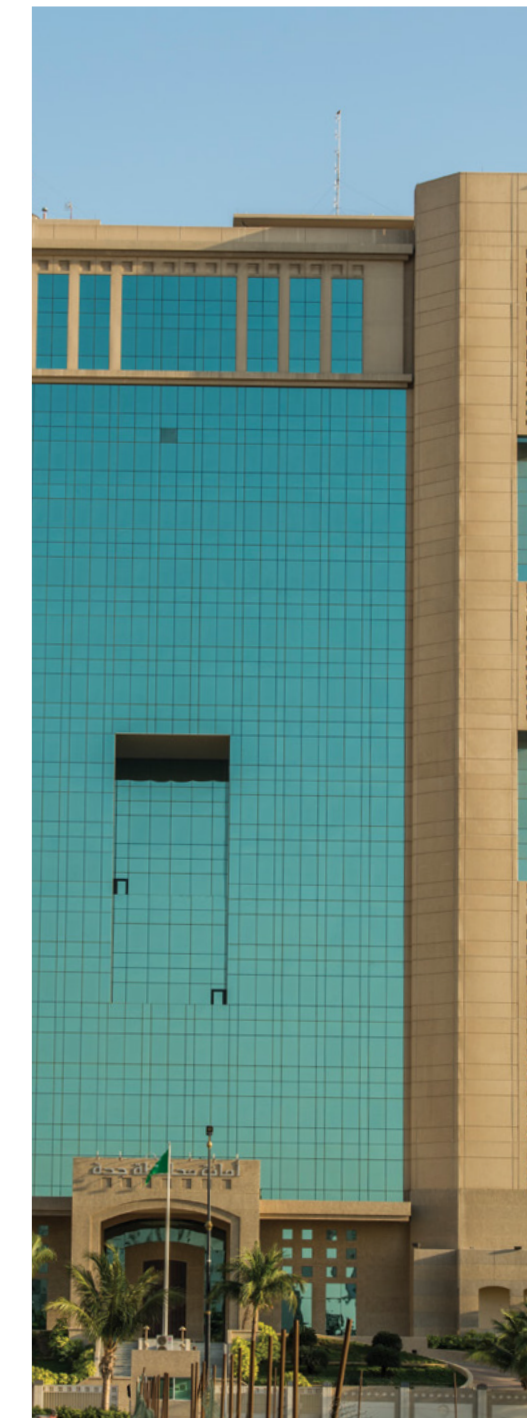
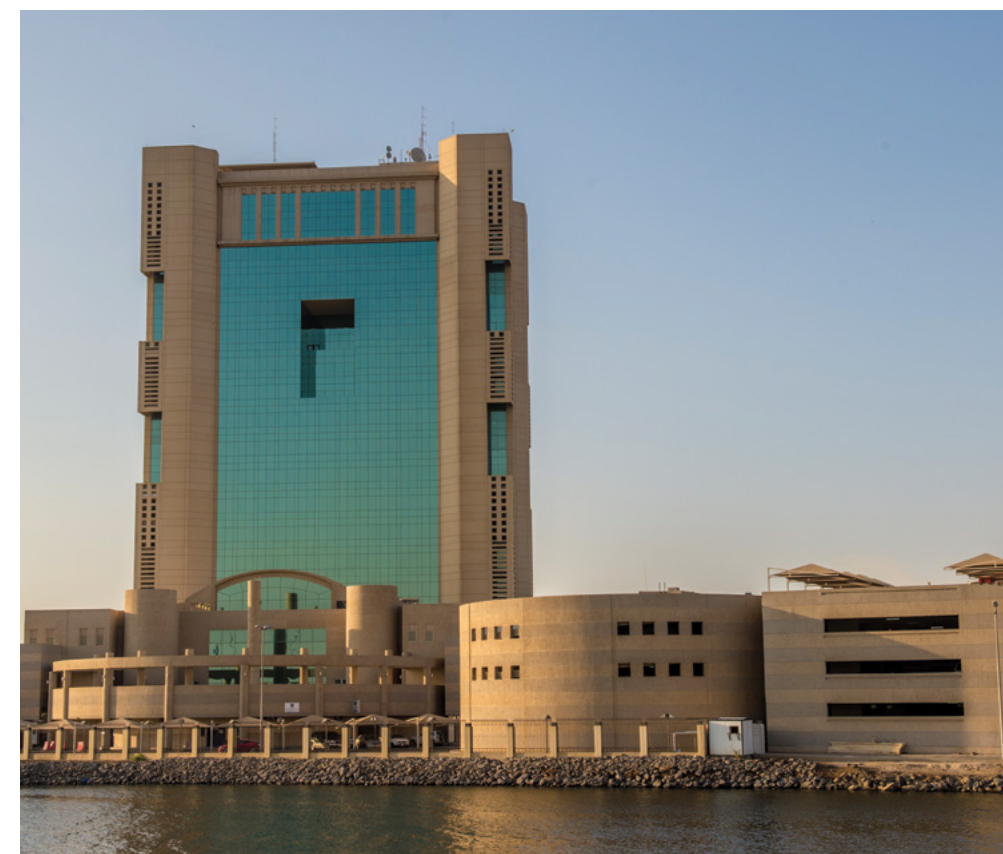
JEDDAH MUNICIPALITY

Jeddah, Saudi Arabia

This turnkey project was one of the tallest structures built along Jeddah's seaside cornice at the time of its completion.

Alsaad, with Almbani General Contracting as Joint Venture partners, brought their expertise to the forefront to ensure the Jeddah Municipality Building is a headquarters that reflects the municipality's identity and houses all its offices under one roof. The building is dotted with a modern design and has two distinct structures: a 19 floor tower with a built up area of 57,000 m² and an adjacent multi-story covered parking structure with a total

area of 23,000 m² over three floors. The project was completed and handed over in November 2006.





06

SAUDI FRANSI BANK REGIONAL HEADQUARTERS Jeddah, Saudi Arabia

This turnkey project, which was executed with Almbani General Contracting as Joint Venture partners,

is located in Jeddah, Saudi Arabia, and features many key elements in one ambitious undertaking. The Banque Saudi Fransi project not only offers a high-tech setting for the bank's trading operations but also provides housing for all regional employees. It even includes a multi-story reinforced concrete parking building. Alsaad worked on all internal and external finishes as well as the project's services and utilities, parking facility, sewage treatment

plant, and energy saving thermal storage tanks that store chilled water during the night and cycle it during the day. The total built-up area of the project is 23,000 m². The project was completed and handed over in May 2000.





07

CIVIL DEFENSE HELIPORTS

Jeddah, Riyadh, Dhahran & Abha, Saudi Arabia

This project is located in four different locations in Saudi Arabia (Riyadh, Abha, Dhahran, and Jeddah)

and was built for the General Directorate of Civil Defense (Security Air Force) at the Ministry of Interior. Alsaad worked on the first phase of demolition plus the rehabilitation and construction of diverse new facilities, helipads, and associated utilities. Those facilities come together to form the hub of the Civil Defense's aviation arm which focuses on fire fighting aid, rescue missions, and security missions all over KSA. With four steel structure

pre-engineered aircraft hangars buildings in the different locations and all their related facilities from helipads to runways and training centers, this project involved multidisciplinary know-how. The heliports and facilities also boast many advanced technology system such as water mist fire fighting system. The total area for the four locations is 767,641 m². The project was completed and handed over in July 2012.





08

SAUDI ARABIAN NATIONAL GUARD FACILITIES

Jeddah and Taif, Saudi Arabia

This turnkey project is located in three different sites (Jeddah, Taif, and Bahra)

in Saudi Arabia. Alsaad worked on the construction of buildings and housing facilities for the Saudi Arabian National Guards (SANG) battalions. The scope included the rehabilitation of existing structures in addition to civil, structural, architectural, and E/M works for new facilities, complete with sewage treatment plants, electrical sub-stations, and even elevated and ground water tanks. This massive yet smoothly executed project consisted, all in all, of 69 concrete buildings,

64 steel structures, 11 power houses, 22 athletics facilities, two sewage treatment plants, and other miscellaneous work. The total built-up area for the three sites is 71,800 m². The project was completed and handed over in November 2010.





09

LIGHT INDUSTRIAL FACILITIES

Rabigh, Saudi Arabia

The project is located in Rabigh, Saudi Arabia, home to the King Abdullah Economic City.

Alsaad General Contracting Company was commissioned to build a facility for light industries. This was one of the very first projects to be handed over in KAEC. Several new facilities were built to answer growing demand and expansion. These were an administration building, light industry structure, dormitory, mosque, and powerhouse. Alsaad was able to rise to the challenge of constructing the project in only 13 months. The consultant was Dar Al-Handasah while the project

manager was Turner. The total built-up area is 22,606 m² on a 38,000 m² lot. The project was completed and handed over in November 2008.





10

CENTRAL SECURITY FACILITY

Makkah, Saudi Arabia

This project is located in Al Sharaya in Makkah, Saudi Arabia.

Alsaad General Contracting Company worked on the construction, completion, maintenance and warranty of the Ministry of Interior's Central Security Building. This pivotal project provides the community with greater security. It encompasses several facilities including a four story main building complete with offices, jail room, interrogation rooms, visiting room control rooms, day court and more. The scope included external infrastructure works. It also boasts a service building, an electrical

room, observation towers, a female tank building, a reception building, and an arrest and guard building. The total built-up area is 11,849 m². The project was handed over in December 2013.





11

PWA CAR PARKING BUILDING

Doha, Qatar

The proposed parking structure is strategically located within the centre of West Bay Downtown, Doha- Qatar, near to the Public Works Authority (PWA) West Bay head office.

This project is for a “design-build” type achieving a QSAS 3* rating and is expected to be completed in October 2015. The proposed multi-storied parking structure designed to be a full precast solution in order to address the various site constraints and also to allow a fast-track construction program.

The proposed parking structure would have a ground floor, two basement levels, seven floors, and a roof level, for a total of ten levels of parking with a total floor area of 21,920 square meters. The plot area is around 3,500 square meters.

The proposed parking structure will provide parking facilities to 517 vehicles which includes 15 parking slots for disabled/handicapped persons.





RESIDENTIAL & INTERIORS

01

Golden Tower

07

Marina Bay Residence

02

Obhur Palace

08

Trabault Residence

03

Marina Residence

09

Jeddah Palace

04

Obhur Beach House

10

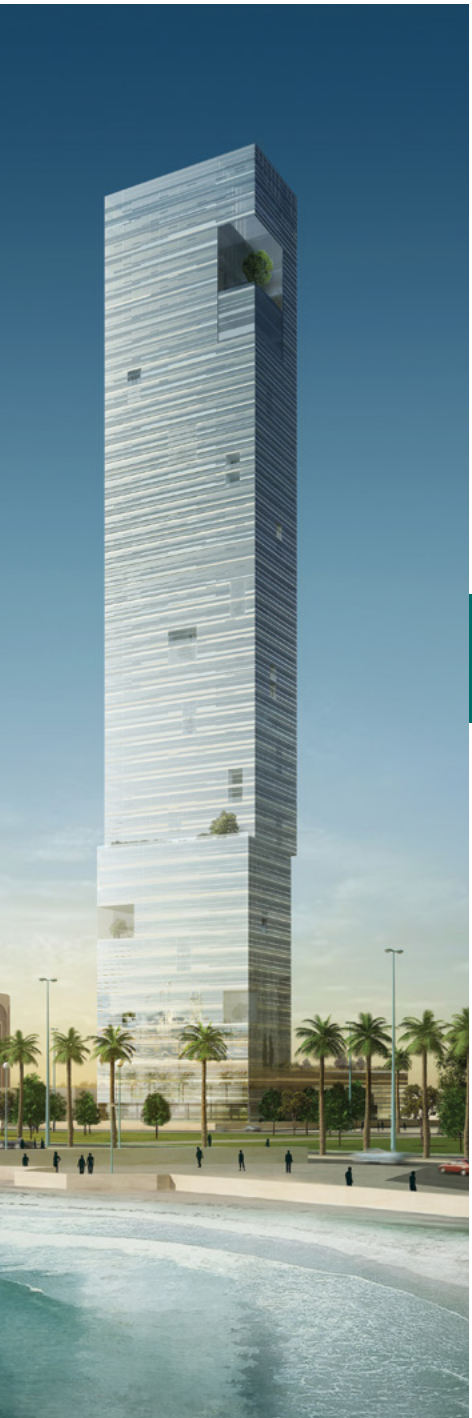
Interiors

05

Shoiba Power Plant
Permanent Housing
Complex

06

Park View Residence



01

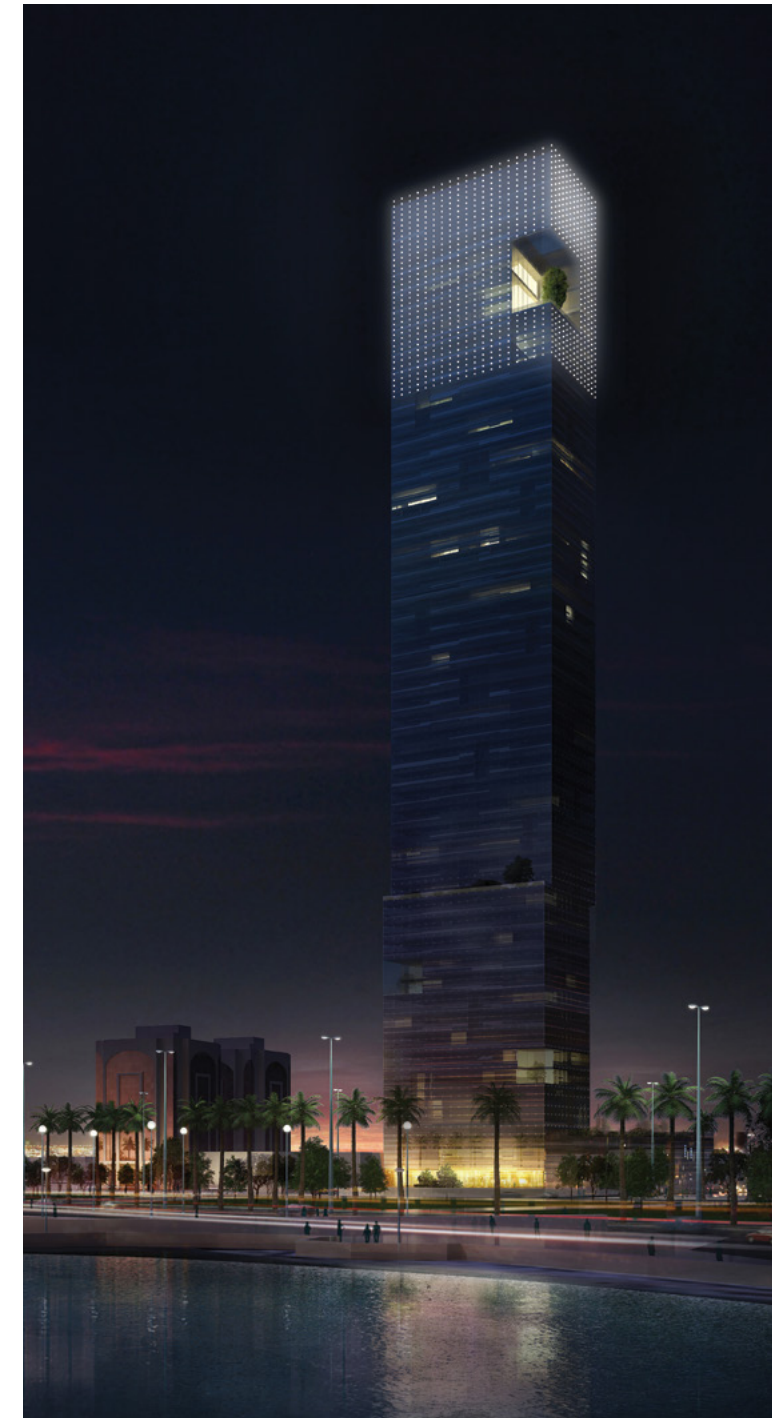
GOLDEN TOWER

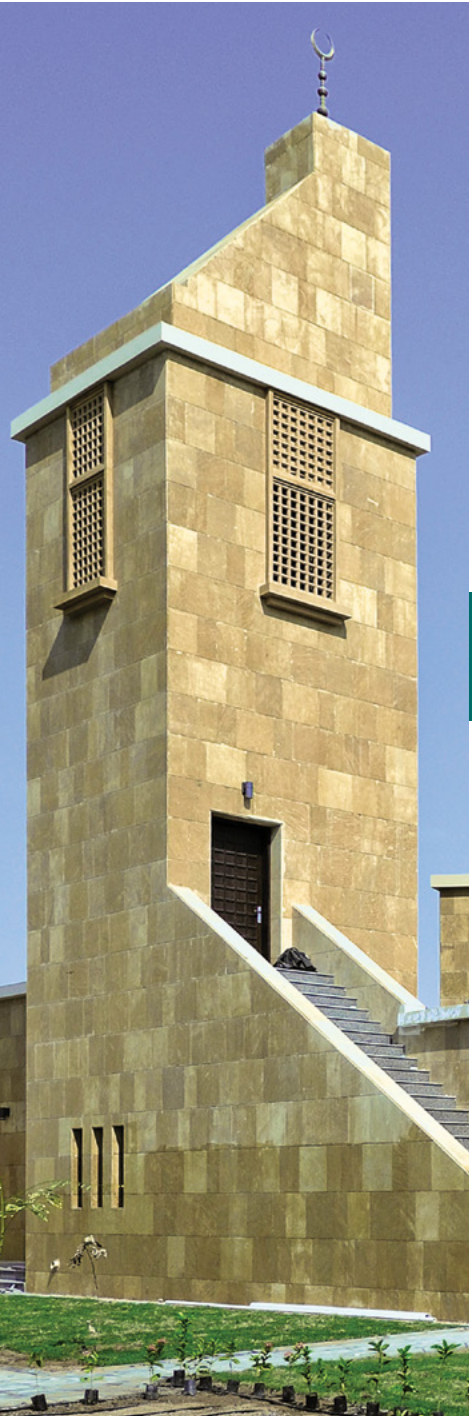
Jeddah, Saudi Arabia

Located in Jeddah, Saudi Arabia, Golden Tower is a high-end residential development

which brings to life the joy of superior living standards in a prime place along the Red Sea coastline. Alsaad is working on this turnkey project which rises 49 stories high, soaring 225m above street level. It includes one basement, a ground floor, three podium floors, two refuge floors, and a technical floor with the latest BMU system mounted over the building's roof top. Golden Tower boasts stunning views and embodies truly expressive contemporary architecture with a highly

detailed, a unitized curtain wall and other design elements that create a unique aesthetic (from the horizontal displacement of the top ten floors to see-through balustrades and "green pockets" of landscaped terraces). The project will be completed in late 2016.





02

OBHUR PALACE

Obhur, Saudi Arabia

Located in Obhur, Saudi Arabia, this is a turnkey project along the open seashore line north of Jeddah.

Alsaad General Contracting Company worked on the construction of Obhur Palace in addition to the interior design, soft furnishing, furniture supply, a 100 m long boat berth, shore protection, and an inland dredged sandy beach. Obhur Residence is an impressive, large palace with a main residence, a formal reception building, and 29 annex buildings. The total built-up area is 16,520 m². The project was completed and handed over in December 2010.





03

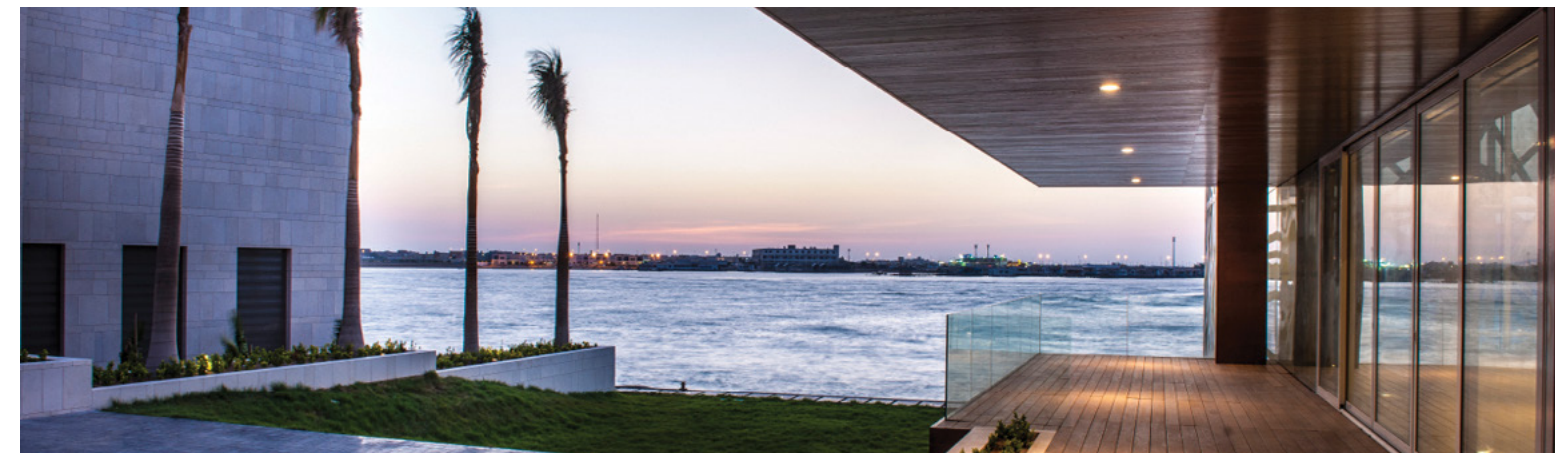
MARINA RESIDENCE

Obhur, Saudi Arabia

Located in Obhur, Saudi Arabia, this high-end turnkey project is a multipurpose residential complex along the southern shoulder of Obhur's creek.

Alsaad General Contracting Company worked on Marina Residence, coming up with unique contemporary architecture solutions such as a "glazed bird nest". This distinctive architectural expression combines large glazed panels suspended and connected by stainless tension rods and spider accessories with an external envelope resembling a bird's nest made from laser cut aluminum composite

sections. This was specially made for this project. The total built-up area is 1,045 m². The project was completed and handed over in September 2011.





04

OBHUR BEACH HOUSE

Obhur, Saudi Arabia

Located in Obhur, Saudi Arabia, this private residential complex makes its home along Obhur's creek to the north of Jeddah.

Alsaad worked on all trades in addition to the interior design, soft furnishing, and furniture supply. Obhur Beach House includes a main residence, annexes, a tennis court, a dredged inland beach area, a quay wall for mooring boats, a large reflective swimming pool, a gymnasium, and other amenities including a desalination plant and a huge underground water tank. It's more than a home, it's a lifestyle. The total area of the building is around 7,150 m². The project was completed and handed over in early 2010.





05

SHOAIBA POWER PLANT PERMANENT HOUSING COMPLEX

Shoaiba, Saudi Arabia

Located in Shoaiba, Saudi Arabia, this project is part of the Shoaiba Power Plant and provides comfortable housing for many families.

Alsaad worked on the multistory RCC framed structure which houses many apartments which are approximately 250 m² each. Every floor has two family apartments. The project involved building a real community and hence it extended to a potable water supply facility, a sewage treatment and dispose facility, firefighting, a fiber optic telephone lines facility, a gym, a recreation room, swimming pool,

external facilities and roads. The large plot is even landscaped to include more than 100 car parks, a football field, and an amusement park for residents. The project will be completed and handed over in 2014. It's worth noting that Alsaad built a similar project as housing for Shoaiba Power Plant (phase I) staff, including seven buildings for employees' families, for technical buildings and one building for engineers. This project was handed over in 2001.

Total land area is 55,000 m² and the total built-up area is 29,000 m².





06

PARK VIEW RESIDENCE

Beirut, Lebanon

Located in Beirut, Lebanon, this modern glass and stone residential building was the very first to be built on the reclaimed land in the heart of the hotel district in Downtown Beirut.

It faces Solidere's main park and marina and is right next to the Four Season's Hotel. The wide array of construction management tasks were handled by Alsaad's sister company in Beirut: United Lebanese Contracting Company. Park View Residences includes high-end retail shops along Park Avenue, luxurious apartments, a rooftop penthouse, underground parking, as well as drivers'

quarters for each residence. The project's total built-up area is 25,000 m². It was completed and handed over in 2004.





07

MARINA BAY RESIDENCE

Dbayeh, Lebanon

Located in Dbayeh, Lebanon, this luxurious building is on the southern coastline of Joseph Khoury's Marina.

Alsaad's sister company in Beirut, United Lebanese Contracting Company, was the general contractor. Marina Bay Residence boasts refined design in addition to a number of underground parking facilities, machine rooms, a couple of duplexes on both sides of an outstanding high ceiling entrance lobby, and nine impressively expansive residential floors. Its total built-up area is 13,500 m². The project was completed and handed over at the end of 2005.





08

TRABAULT RESIDENCE

Beirut, Lebanon

Located in Ashrafieh in Beirut, Lebanon, this boutique sized residential building has elegant charm.

Alsaad's sister company in Beirut, United Lebanese Contracting Company, designed, built, and managed this project. Trabault Residence features six typical apartment floors, a duplex pent house, and underground parking floors. The entire building boasts a well detailed and highly finished appearance. Its total built-up area is approximately 3,600 m². The project was completed and handed over at the end of 2001.





09

JEDDAH PALACE

Jeddah, Saudi Arabia

Located in Jeddah, Saudi Arabia, this turnkey project is a vast and splendid private residence.

Alsaad's scope included the introduction of one of the first building management systems for residential projects at the time in addition to all civil, structural, architectural, electro-mechanical, interior design, finishing, and furnishing works. Jeddah Palace features a main palace, an administration building, a butlers' building, a guest villa, male and female quarters, and external site works. Its approximate total built-up area is 20,000 m². The project was completed and handed over in April 1993.





10

INTERIORS

Alsaad always pays meticulous attention to detail and this is one of the firm's primary strengths.

Alsaad's talented designers and highly skilled labor finishing teams excel at delivering superior quality interior and exterior finishes and are committed to using only the best construction techniques in the industry. Working with clients to bring their vision, preferences, and lifestyle needs to life, Alsaad provides different design proposals and has solid expertise in diverse styles from traditional to modern interiors. Beyond excellent design, Alsaad has a proven track record in

the actual execution of the interior spaces as well as the supply and installation of soft furnishing and furniture items. This means clients can enjoy comprehensive services and expertise.





HOTELS & RESORTS

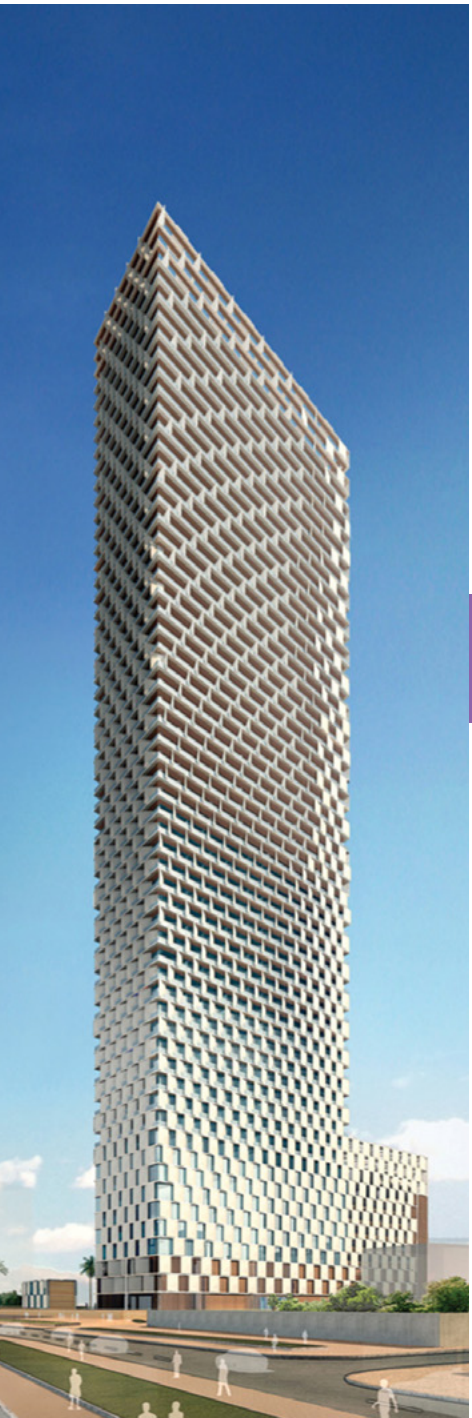
01 The Sail Tower

02 Assila Towers

03 Grand Hyatt Hotel

04 Elaf Jeddah Hotel

05 Oberoi Hotel



01

THE SAIL TOWER

Jeddah, Saudi Arabia

The turnkey Sail Tower is an internationally recognized architectural award winning icon.

It is located on a prime spot along the corniche in Jeddah, Saudi Arabia. Alsaad with Besix as Joint Venture partner are playing a central role in making this 265 meter tall structure a success. The Sail Tower features three basements and technical floors as well as 64 mixed use hotel rooms and apartments. The surrounding grounds and parking have a total built-up area of 150,000 m². Luxurious two-to-four bedroom apartments are on levels 29 to 63 and

a penthouse crowns the top floor. The project also includes a seven-story podium and a three-story pre-function ballroom. The 5-Star Hotel makes its home on the lower 28 floors of the tower and boasts 224 guest suites, 18 serviced-apartments, four restaurants, a male and female health club/spa, a kids' club, and an outdoor pool with stunning views of the Red Sea. The Residences are housed on floors 29 to 63. The slender rectangle design and sail-shaped façade elements add distinctive charm to the tower while providing a range of ingenious benefits. Belgium based Besix is our Joint Venture partner. The project will be completed in 2017.





02

ASSILA TOWERS

Jeddah, Saudi Arabia

Located along the well-known and busy high end Tahlia Street in Jeddah, Saudi Arabia,

this turnkey hospitality complex managed by the internationally renowned Rocco Forte operator is set to become an iconic landmark. And Alsaad brought its expertise to the forefront to make this happen. Assila Towers is made up of two towering buildings topping a large podium and four underground parking garages. The first building is a 23 story hotel with 197 rooms and suites, while the second is a 17 story residential building with serviced apartments. The podium

boasts vast retail space. Assila Towers has distinctive architecture with eye catching curvilinear curtain wall facades, highly elaborate drywall partitions, and other key features. The highest international standards for noise treatment and fire safety are prominent throughout. The total built-up area is 83,000 m². The project will be completed in 2014.





03

GRAND HAYATT HOTEL

Amman, Jordan

Located in Jordan's capital, the Grand Hyatt Amman is in the heart of the city's bustling business & diplomatic district and enjoys easy access to key centers and the airport.

Alsaad, in a joint venture with Saudi Binladin Group, provided all civil, structural, architectural, electromechanical, and landscaping works. The hotel has 316 elegant guest rooms including 17 suites and 50 luxurious residential apartments for long stay guests. The residential apartments in Hyatt Tower are linked to the hotel through a walkway. The Grand Hyatt

Amman features three meeting facilities, 14 meeting rooms, three boardrooms, and an outdoor function space. The total built-up area is approximately 46,000 m². The project was completed and handed over in 1999.





04

ELAF JEDDAH HOTEL

Jeddah, Saudi Arabia

Located in Jeddah, Saudi Arabia, this eight story hotel building is actually an addition to the Red Sea Mall complex and hence is in one of the two towering structures behind the mall.

Alsaad handled all the architectural finishes and electro-mechanical works. The 5-Star Elaf Jeddah Hotel has 169 elegantly modern guest rooms and features a variety of amenities including a business center, meeting rooms, coffee shops, a restaurant, an outdoor tennis court, an outdoor swimming pool, a health club, spa services, and a terrace. The total

built-up area is approximately 12,300 m². The project was completed and handed over in January 2009





05

OBEROI HOTEL

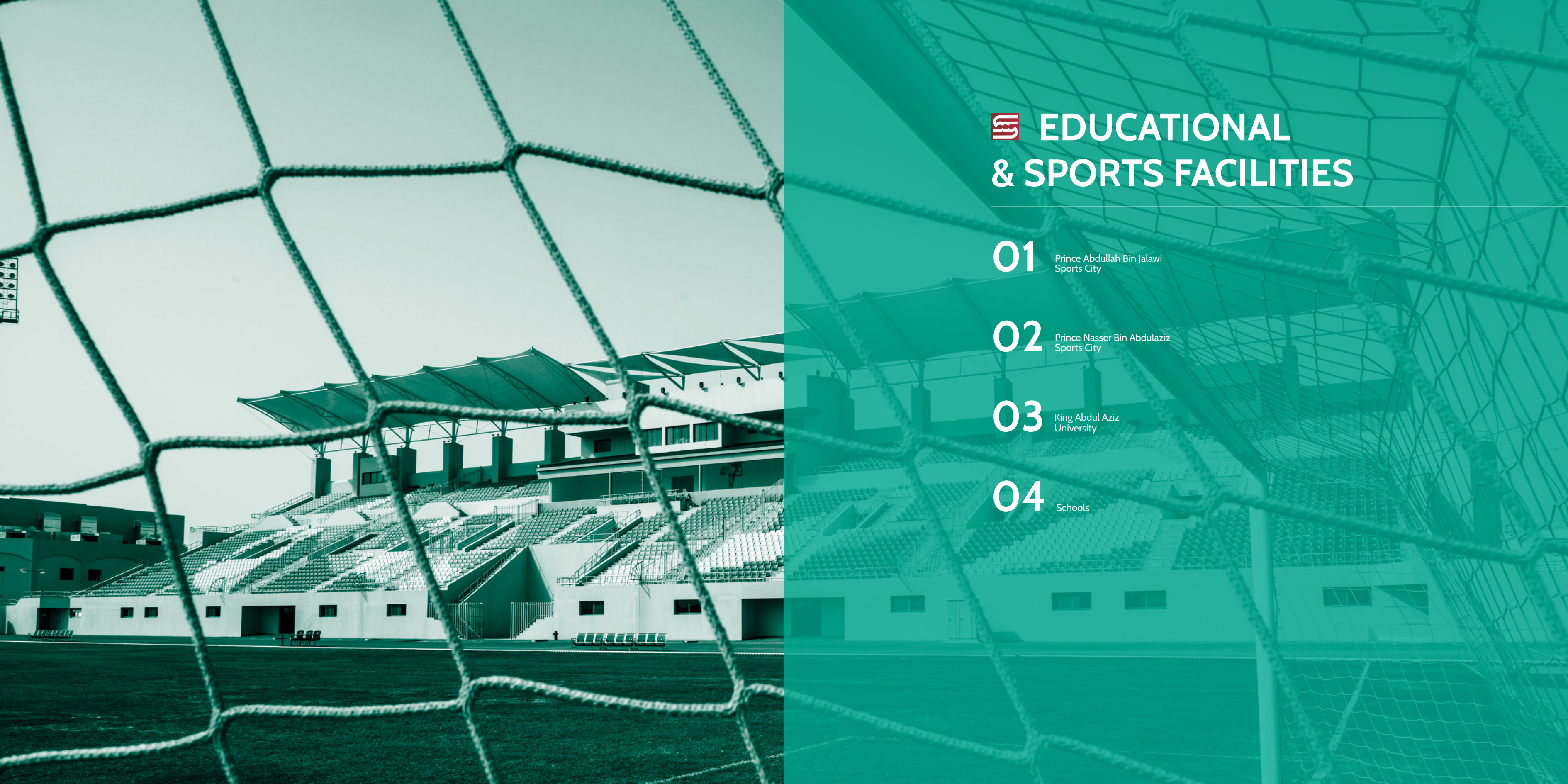
Medina Al Munawwara, Saudi Arabia


Located in Medina Al Munawwara in Saudi Arabia, this project is a vital extension to an existing 5-Star hotel located along the Haram's north side.

Alsaad's scope included the structural and finishing works in addition to the construction of three basement floors, a ground floor, mezzanine, first floor reception areas, a mechanical floor, and twelve hotel floors with lovely guest rooms. Since the extension had to seamlessly blend in with the existing hotel, two solutions were executed: one was a vertical extension above the

existing building while the second was a horizontal and vertical extension. The total built-up area for the whole extension is approximately 18,500 m². The project was completed and handed over in December 1996.





 **EDUCATIONAL
& SPORTS FACILITIES**

01 Prince Abdullah Bin Jalawi
Sports City

02 Prince Nasser Bin Abdulaziz
Sports City

03 King Abdul Aziz
University

04 Schools



01

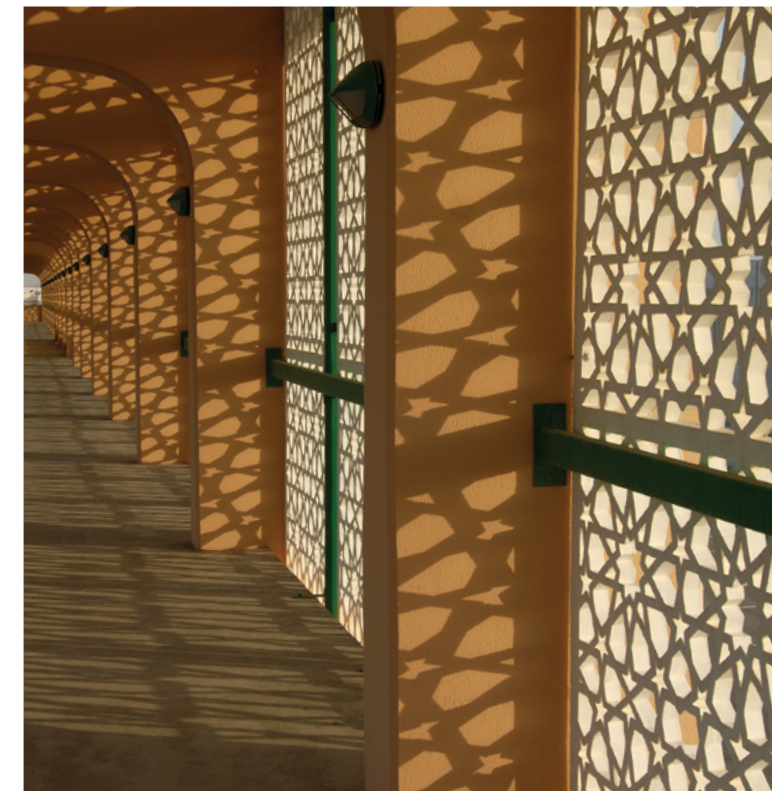
PRINCE ABDULLAH BIN JALAWI SPORTS CITY

Al Ehsa, Saudi Arabia

Located in Al Ehsa, Saudi Arabia, this fully integrated sports complex was built and handed over by Alsaad on a turnkey basis.

The Prince Abdullah Bin Jalawi Sports Center embodies highly sophisticated international design standards throughout. The central structure is an outdoor stadium surrounded by a three-sided spectators' gallery. It also features a grand stand with a shaded VIP section and a commentator's box. The arena provides the ideal setting for all types of track and field activities combined

with a football pitch of natural grass. Other structures include dedicated spaces for indoor basketball courts, gymnasiums, swimming pools, changing rooms, shower and toilet facilities, administration, car parks, and all supporting amenities. The total built-up area is 8,975 m². The project was completed in October 2004.





02

PRINCE NASSER BIN ABDULAZIZ SPORTS CITY

Wadi Al Dawasser, Saudi Arabia

Located in Wadi Al Dawasser, Saudi Arabia, this fully integrated sports complex was built and handed over by Alsaad on a turnkey basis.

The Prince Nasser Bin Abdulaziz Sports Center is similar to the Prince Abdullah Bin Jalawi Sports Center since it also embraces highly sophisticated international design standards on all levels and has similar features. Unlike the other sports center though, it boasts two additional play fields. The facility's total built-up area is 14,701 m². The project was completed in February 2009.





03

KING ABDUL AZIZ UNIVERSITY Jeddah, Saudi Arabia

Alsaad was awarded several turnkey contracts for King Abdul Aziz University in Jeddah, Saudi Arabia.

They include an extension to the Academic Square building which houses the astronomical observatory with its classrooms and labs (total built-up area 19,400 m²); the 30,000 m² Faculty of Arts and Humanities for Women with its 250 seat auditorium and high standard finishes; the English Language Center for Men with its classrooms, computer labs, and offices (23,000 m²); the 19,000 m² central workshop

and laboratories; the completion of the Support Deanship (total built-up area 47,000 m²); and the extension of English Language College at the Women Section (built-up area 14,000 m²). Work on the project's super structures included architectural, mechanical, plumbing, electrical, instrumentation, fire fighting, communication system, etc. Some of these contracts were completed and handed over in 2013 and 2014, while others are still ongoing.





04

SCHOOLS

Alsaad is committed to the community and shows it by creating safe and smart school structures which provide an appropriate healthy environment for effective teaching.

By educating the youth, we are all paving the way for a better future. This is why Alsaad has built more than 30 schools for the Ministry of Education (MOE) with a total area in excess of 75,000 m². It has also built two girls' and two boys' schools in Yanbu schools in Yanbu for the Royal Commission of Yanbu and Jubail. Alsaad's schools forte includes civil, structural, architectural, electro-mechanical, external, & furnishing works.





MARINE & DREDGING

01 Duba Commercial Port

02 Jubail Commercial Port

03 Yanbu Industrial Port

04 King Abdullah
Civic Center

05 King Fahed
Industrial Port



01

DUBA COMMERCIAL PORT

Duba, Saudi Arabia

This bustling commercial port is located along the Red Sea in Duba, Saudi Arabia.

Alsaad constructed a 440 lm multi-purpose quay wall with a depth of 14 m inclusive of all utilities and marine furniture. It also executed the deepening of the port's entry channel and turning basin by dredging 5.5 million m³ of materials. Alsaad is currently working on constructing the port's first container terminal berths with a length of 550 meters built on auger cast piles. It is also handling the excavation, dredging, backfilling, concrete piling, concrete slabs, and quay marine furniture.

In summary, everything from the rails to the electrical system and maritime signaling. The project will be completed in May 2015.





02

JUBAIL COMMERCIAL PORT

Jubail, Saudi Arabia

This thriving commercial port is located in Jubail along the Eastern Province of Saudi Arabia.

Alsaad worked on developing the port's container terminal, constructing a fishers' port, and dredging 4.5 million m³ for the port's entry channel and berths. The scope also encompassed constructing 350 km of quay walls plus 1,200 km of refurbishment in addition to an administration building, a mosque, a mess hall, street lighting, a new substation, water and sewer lines, and 300,000 m² of heavy duty external pavement. Even rock armoring was

implemented to protect the reclaimed area. Existing water drain lines were re-routed by constructing long concrete trenches. The project will be completed and handed over in March 2015.





03

YANBU INDUSTRIAL PORT

Yanbu, Saudi Arabia

The busy Yanbu Industrial Seaport at the King Fahed Industrial Port is located along the Red Sea shoreline in Saudi Arabia.

Alsaad is working on the construction of four quay walls (each 300 meters long). Works include: block casting, trench dredging under the quay wall in soft and rocky material, backfilling and leveling the trench base's foundation, reclamation with rock and soil behind the quay wall (1.2 million m³) in addition to corrosion protection. The quay walls are being constructed out of concrete blocks that

weigh 120 to 160 tons each, and are being built at a water depth of 20 meters. The offshore installation of concrete blocks is being handled by an offshore 400 Ton Liebherr crane on a floating barge with full survey and positioning systems. The project will be completed in March 2016.





04

KING ABDULLAH CIVIC CENTER

Dammam, Saudi Arabia

This project is located in Dammam, the coastal city of the Eastern Province of Saudi Arabia.

The King Abdullah Civic Center is a landmark waterfront development. Alsaad is working on the offshore elements which include dredging, reclamation, breakwater, retaining walls, and more. One of the most remarkable tasks includes the reclamation of two artificial islands (around 186,000 m² and approximately 64,000 m² respectively) as well as the dynamic compaction and construction of a 1,572 lm breakwater and 3,977 lm of retaining and quay walls. The project will be completed in March 2015.





05

KING FAHD INDUSTRIAL PORT

Jubail, Saudi Arabia

This project is located in Jubail, Saudi Arabia.

Alsaad's work for the King Fahd Industrial Seaport encompassed the rehabilitation and maintenance of berths including petrochemical quay (berths 41, 42, 43 & 44) and Open Sea Tankers terminal (berths 62, 63 & 64). Alsaad's scope of work included concrete repair, painting existing steel structures, cleaning or replacement of anodes, the installation of life jackets on splash zones of columns, and the replacement of deteriorated metal on the decks. The project was completed and handed over in July 2007.





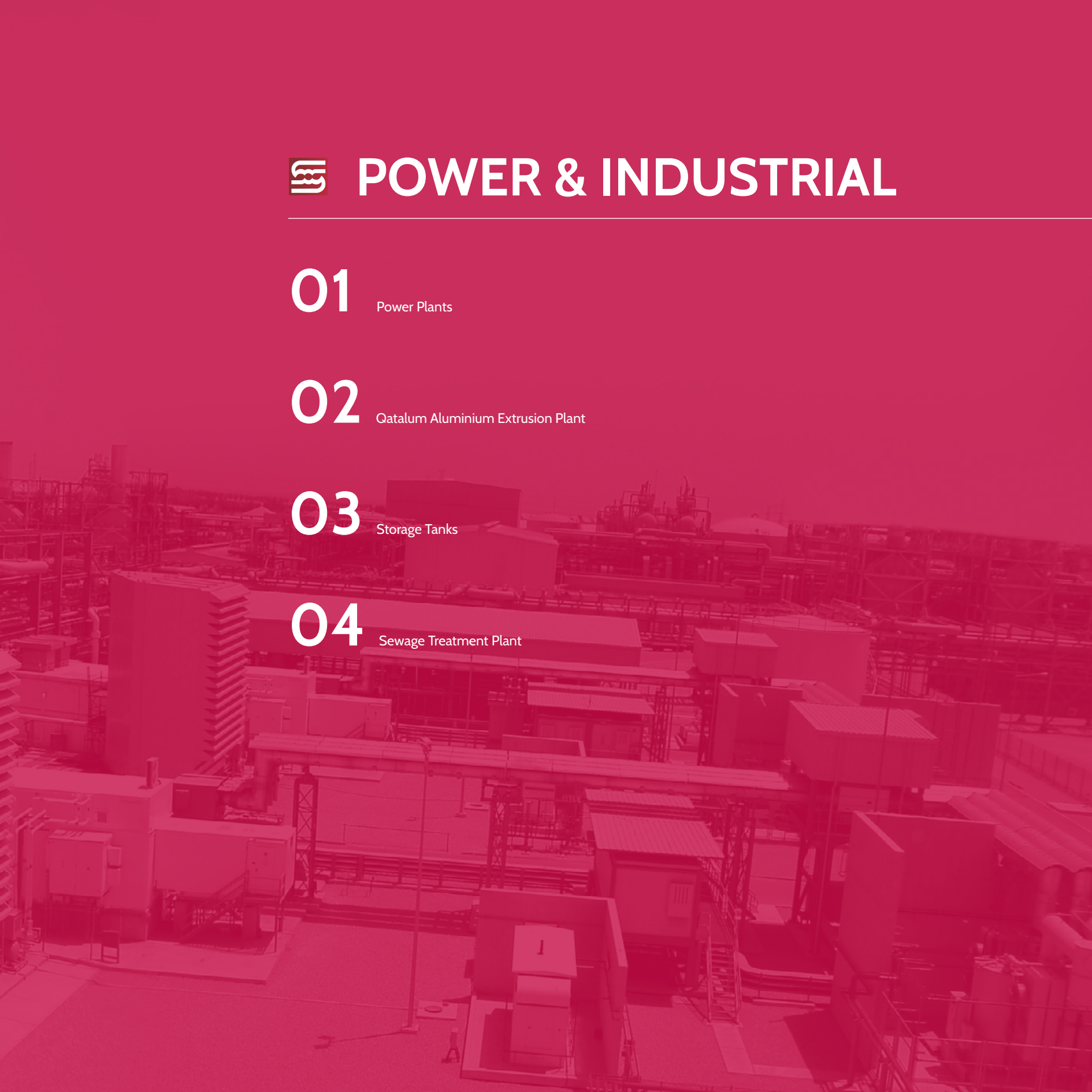
POWER & INDUSTRIAL

01 Power Plants

02 Qatalum Aluminium Extrusion Plant

03 Storage Tanks

04 Sewage Treatment Plant





01a

POWER PLANTS

Alsaad, acting as a subcontractor for BEMCO, the EPC contractor, executed infrastructure and building works for the following power plants (a & b).

RIYADH POWER PLANT (PP10) 3,000 MW Riyadh, Saudi Arabia

The scope of work for the PP10 project, which powers KSA's capital city,

encompassed many elements, including: the power block (from earthworks to fuel management, skid shelters and control rooms, superstructure concrete, and more); the electrical side GSU and auxiliary transformer (fire walls foundations including substructure, fire walls superstructure, and transformer foundations); the mechanical utilities (from the firefighting station and fire water reserve tanks to the sludge oil drain storage tank foundation, fuel treatment plant and

fuel unloading facilities, and more); and the drainage ditch. This project was completed and handed over in July 2011.



01^b

RIYADH POWER PLANT (PP9) 5,080 MW

Riyadh, Saudi Arabia

PP9 is the largest in Saudi Arabia. It boasts a combined power generation capacity of 5,080 MW.

Alsaad's scope on all four contracts involved the execution of civil, structural, and architectural works for turbine foundations, water tanks, turbine buildings, water treatment buildings, control rooms, fire stations, fire and foam protection buildings, a fuel unloading and metering station, a crude oil treatment building, fuel treatment building, fuel storage buildings, chemical laboratories, fire protection, water tanks, tunnels and over bridges, a raw

water cooling tank, and a perimeter ditch. The work on Block A&B (1,700 MW) was completed and handed over in February 1999. Block C&D (1,700 MW) and Block F (12 Units) were successfully completed in August 2008 despite a tight deadline. Block E (680 MW) was completed in September 2004 in a record seven and a half months considering the scope included the addition of eight gas turbines and supporting facilities. Installation of Turbine Inlet Air Cooling system (TIAC), Spanish Technology, was also part of our scope.



01_c

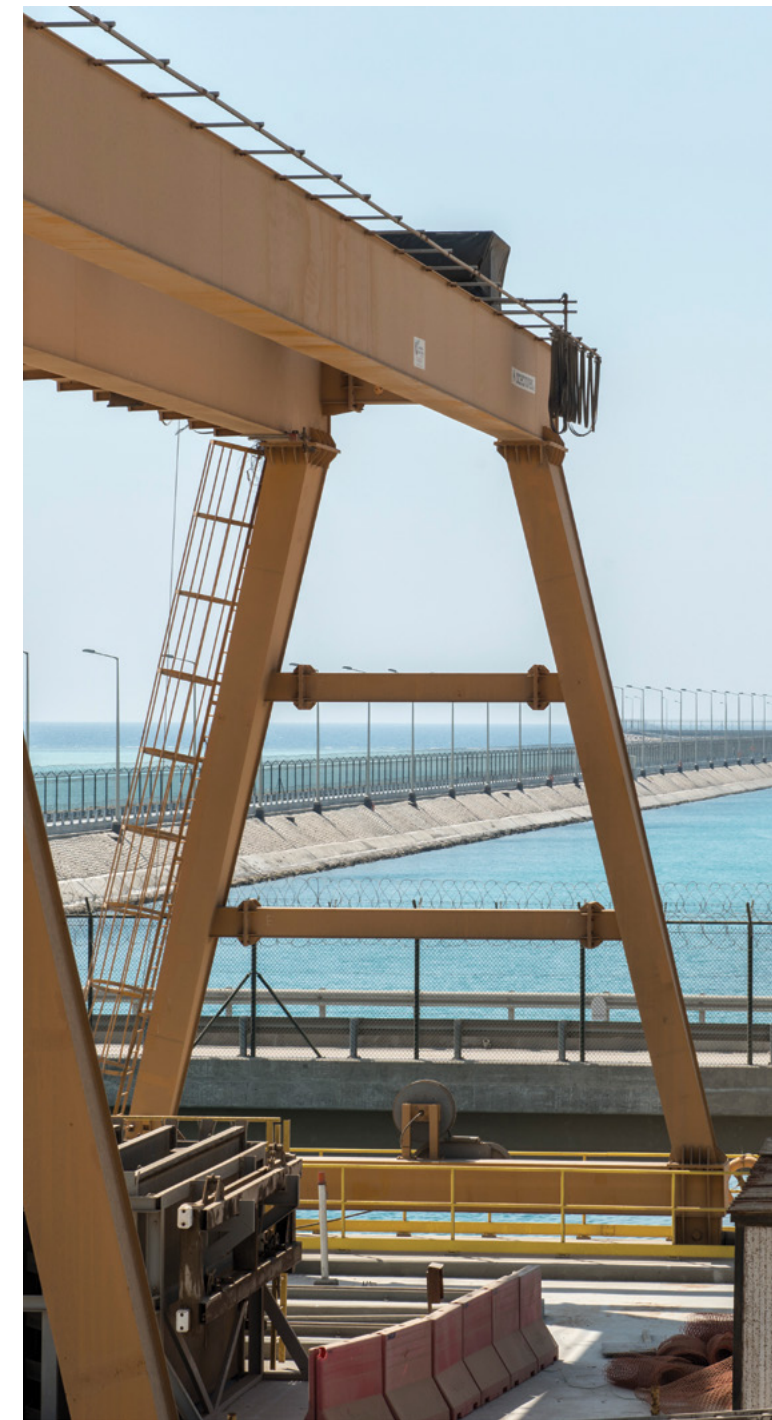
SHOAIBA POWER PLANT

Shoaiba, Saudi Arabia

Located in Shoaiba in Jeddah, Saudi Arabia, the Combined Cycle Power Plant is one of the largest power plants in Saudi Arabia with a capacity of 1,238 MW.

Alsaad, commissioned by Daelim, worked on the structural and finishing works for Power Block # 02. This translates into a total developed area that spans 70,000 m² which included all the civil and building works for five units of gas turbine generators and their associated auxiliaries (from a Local Electric Control Building to an administration annex building, five

heat recovery steam generators, and much more). Alsaad also put its expertise to good use working on the Balance of Power Plant (BOP) support buildings that have a total developed area of 30,000 m². The scope covered all the civil and building works for a cool water electrical building, chlorination building, workshop, and several other structures. All in all, this vast project has many buildings, structures and facilities under its umbrella and is testament to Alsaad's prowess at handling major milestone projects with diverse requirements. The project was completed and delivered in October 2014.



01_d

JEDDAH SOUTH THERMAL POWER PLANT

Jeddah, Saudi Arabia

Jeddah South Thermal Power Plant (2,400 MW) is located along the coast of the Red Sea approximately 70 km south of Jeddah City.

The plant will improve the lives of around two million people. The project involves the construction of conventional oil fired thermal generating units on a turnkey basis and Alsaad was awarded by Hyundai Heavy Industries the onshore civil and building works for power blocks number O3 and O4, alongside the building works in the tank farm area. The civil works span a wide array of features from the STG, boiler,

and ducts support foundations to the pipe laying and drainage. The works cover all the buildings in power block area 3 and 4 in addition to the tank farm area which is home to several key buildings. The project will be completed in August 2015.





02

QATALUM ALUMINUM EXTRUSION PLANT

Mesaieed, Qatar

This project is located in Mesaieed, Qatar. The Qatalum Aluminum Extrusion Plant is one of the largest plants of its kind in the entire GCC.

Alsaad was sub-contracted by the EPC contractor, SNC Lavalin, to work on the construction of the services areas and pot room building. A turnkey contract, which boasted a total built up area of 22,000 m² for this heavy industrial plant, comprised constructing the cathode rodding building, a main storage facility, sixteen pot room electrical rooms, and eleven electrical substations. This was

completed and handed over in July 2011. And yet another EPC turnkey contract, with a total built up area of 31,000 m², covered the engineering, procurement and construction of the administrative building, mosque, guardhouse, service center, workshop, and emergency center. This was completed and handed over in May 2012.





03

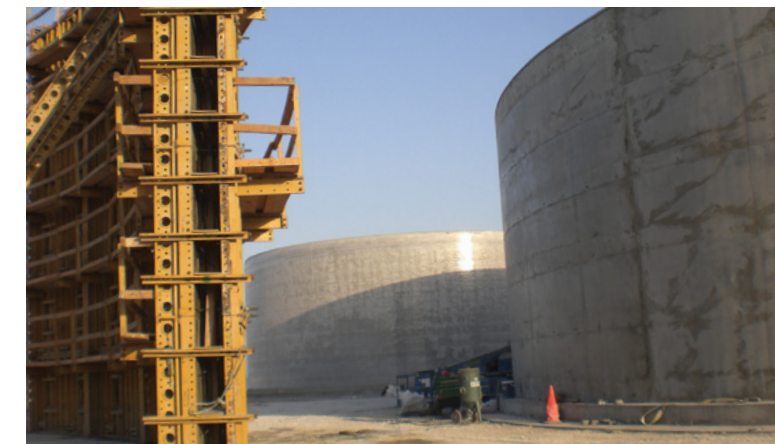
STORAGE TANKS

New Doha International Airport, Qatar Utility Systems CP 13

This project is located at New Doha International Airport in Qatar.

Alsaad engineered and executed 21 circular shaped pre-stressed concrete tanks for diverse uses. They included seven potable water tanks (29 to 45 M diameter and 7 to 10 M High), 2 equalization tanks (51 M diameter and 15 M high), two effluent tanks (36 M diameter and 10 M high), two irrigation tanks (24 to 36 M diameter and 9.5 to 10 M high), three storage tanks (22 M diameter and 5.2 M high), four chlorination tanks (10 to 20 M diameter and 4.5 M high), and one aerobic digester tank

(17 M diameter and 7 M high). The tanks' dimensions vary to optimally meet the unique requirements of each different use. The project was completed and handed over in December 2007.





04

SEWAGE TREATMENT PLANT

King Khaled International Airport,
Riyadh, Saudi Arabia

This project is located at the King Khaled International Airport in Riyadh, Saudi Arabia.

Alsaad was sub-contracted by the EPC contractor to work on the civil works for the wastewater treatment plant. Each day this plant produces 9,600 m³ of processed effluent for irrigation and landscaping purposes. The resultant water helps make the airport a greener place. The project was completed and handed over in 2000.



OUR STANDARDS

QUALITY

Alsaad General Contracting Company's commitment to quality is a vital component that ensures constant & reliable performance. Ambition, dynamism and sustainable development activate our fast evolving business. We are a forward-looking company that works hard, learns constantly & searches to find innovative solutions & services to meet our clients' individual needs, in order to elevate the standards of the industry & to procure stability to our business.

These effective factors earned our company the ISO 9002 (9001:2000), certification in June 2005, and assured our clients and partners of getting the best quality standards the industry may ever offer.

The quality of the services and works of Alsaad General Contracting Company are trustworthy and reliable. They have earned us what is essential for the company: the trust and confidence of our clients.

SAFETY

Alsaad General Contracting Company's senior management are well aware that people constitute its most valuable asset. This explains why safety always comes first.

We are committed to an extensive program, consistent with a professional construction practice that insures that our workers are offered the safest possible working environment, in order to minimize risks and increase accident prevention.

We consider that safety is a determining factor in being successful in our performance, productivity, employee relations, and financial results.

OUR CLIENTS

A

- > Al Shayah Group
- > Abdul Latif Jameel Group
- > Al Juffali & Brothers
- > Almabani General Contractors
- > Arabian Bemco Contracting Co.
- > Assila Investments

B

- > Banque Saudi Fransi
- > Bouygues

C

- > Carrefour

D

- > Directorate of Youth Welfare
- > Daelim Industrial

E

- > Eimar Arabia

G

- > Gulf Stevedoring Contracting Co.

H

- > Hayatt Hotels
- > Honda
- > Hyundai Heavy Industries

K

- > Kingdom Holding Company
- > Khalid Ali Alturki & Sons
- > King Abdulaziz University
- > King Abdullah Economic City

M

- > Ministry of Defense, Kingdom of Saudi Arabia
- > Ministry of Interior, Kingdom of Saudi Arabia
- > Ministry of Finance, Kingdom of Saudi Arabia
- > Ministry of Foreign Affairs, Kingdom of Saudi Arabia
- > Ministry of Education, Kingdom of Saudi Arabia
- > Ministry of Municipal and Rural Affairs, Kingdom of Saudi Arabia
- > Ministry of Agriculture, Kingdom of Saudi Arabia
- > Municipality of Jeddah
- > Municipality of Makkah
- > Majid Al Futtaim Group
- > Ministry of Higher Education – Saudi Arabia
- > Municipality of Dammam

N

- > Nissan

P

- Public Works Authority – Qatar (Ashghal)

Q

- > Qatalum

R

- > Royal Commission for Jubail & Yanbu
- > Raytheon
- > Royal Protocol
- > Red Sea Markets

S

- > SABIC
- > Saudi Electricity Company
- > Savola
- > Sea Port Authority
- > Saudi Research and Marketing Group
- > Saudi Arabian National Guards
- > Solidere International



Jeddah, Saudi Arabia

Bin Commercial Center - Quraysh street

P.O.Box 13028, Jeddah 21493 KSA

T: +966 12 683 0306

F: +966 12 683 2951

E: jeddah@alsaad.com.sa

Beirut, Lebanon

Alsaad Villa, Roma street

P.O.Box 14/5696 Mazra'a Beirut

T: + 961 1 739 223 / 224 / 742 530

F: + 961 1 742 535

E: beirut@alsaadgc.com

Doha, Qatar

Villa No. 1, Qatari Bin Fujaah street - Bin Mahmoud

P.O.Box 200756 Doha-Qatar

T: +974 4431 3983 / 6135 / 7050

F: +974 4435 6221

E: qatar@alsaadgc.com

